

Installation Manual for the Application iHC-MIRF



Contents

1. Introduction3
2. Installing the application on a mobile phone.....3
3. Basic settings4
4. Control..... 12

1. Introduction

The applications iHC-MIRF are designed for comfortable control of the RF Control electrical installation using your mobile telephone. This is an RF Control system accessory, and as a part of the iNELS Smart Home Solution, its elegance blends in with any modern home. The menu is divided into clearly structured sections in which the icons indicate individual functions. Here you will also find fast access to your favorite functions.

Thanks to iHC-MIRF (the "application"), you can perfectly control the function of your wireless RF Control electrical installation. You thus keep complete control over your home lights, appliance switching and heating, etc.

The application only works with the device eLAN RF-003 or eLAN RF-Wi-003. This element must be used in your wireless installation.

- It is designed for devices with iOS 6.1 and higher.
- It is optimized for devices with a display resolution of 800x480
- The application language follows the language set in the iOS

Also new is the implemented communication with Axis video cameras, thanks to which you can monitor what is going on around your home.

It also enables control for multiple users at once (by entering multiple IP addresses).

It does not enable creation of weeklong programming or communicating with temperature actuators.

Downloading

Download the current version (named iHC-MIRF) at the apps store.

<https://itunes.apple.com/cz/app/inels-home-control-rf-for/id704493937?mt=8>

Installing the application on a device



2. Installing the application on a mobile phone

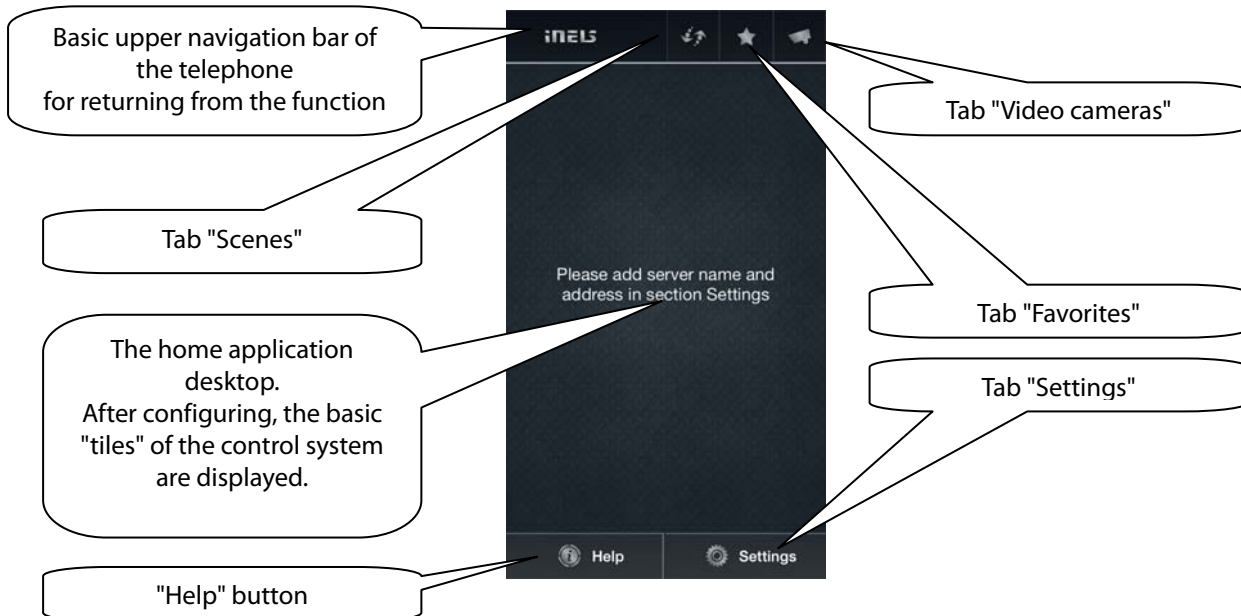
- a) Connect to the Internet using your mobile telephone.
- b) Activate the service app store.
- c) In the search bar, enter the password "iNELS" and press "Search".
- d) Select the application "iNELS Home Control RF Mobile for iPhone" from the list and open the dialog box with information on this application.



- e) Click on "Install".
- f) After the application is successfully installed in the phone, instead of the button "Install", the button "Open" appears.

3. Basic settings

Initial display upon running the application. By tapping "Settings", you open the basic settings menu of the application.



The aim when using the application for controlling the installation is so that after restarting it, it immediately offers control of the electrical installation. To achieve this with the least amount of presses and so that everything required would be offered right from the home desktop, you must first set up and configure the application.

a) Tab "Settings"

Selection for the basic configuration of the application and device, eLAN-RF(Wi)-003 device settings. Configuration of the project of the installation, assigning addresses, pairing actuators, assigning icons, etc..

Selection for setting the tab "Favorites"

Selection for setting the tab "Scenes"

Selection for setting the tab "Video cameras"

Setting the IP address of the communication interface, by means of which the telephone communicates with the wireless elements (eLAN-RF-003, or eLAN-RF-WI-003).

Configuration

IP Settings

Favourites

Scenes

Cameras

Rooms Help

b) Tab "IP settings"

Upon initial configuration, select the "Add" button displayed on the screen. After clicking, you will see the display "IP Settings" as shown below.

Field for entering the IP address of the eLAN device

Field for the selectable name "Naming" the eLAN device in the installation

Field for setting the communication port of the eLAN device: default port 80

Name:

eLAN home

IP address:

10.10.1.10

Port number:

80

Back Save

After tapping "Save", the application moves to a list of set devices. For the application to run, it is necessary to select the check box of the given eLAN, with which the application is to communicate primarily. In this device list, you can have several devices and IP addresses configured. Here you can have one and the same eLAN, but with e.g. two IP addresses, with an internal IP address in a home network, and with a public address for remote communication from anywhere on earth.

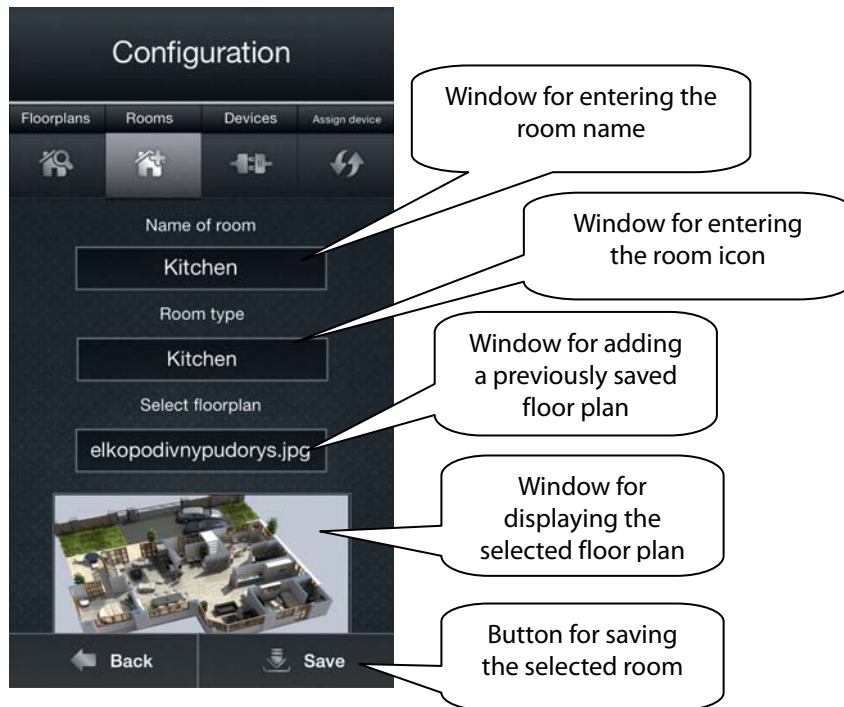
c) **Configuration - floor plan**



After clicking on "Add", you can add any image you like from your telephone that you later want to have displayed, e.g. in the TV application.

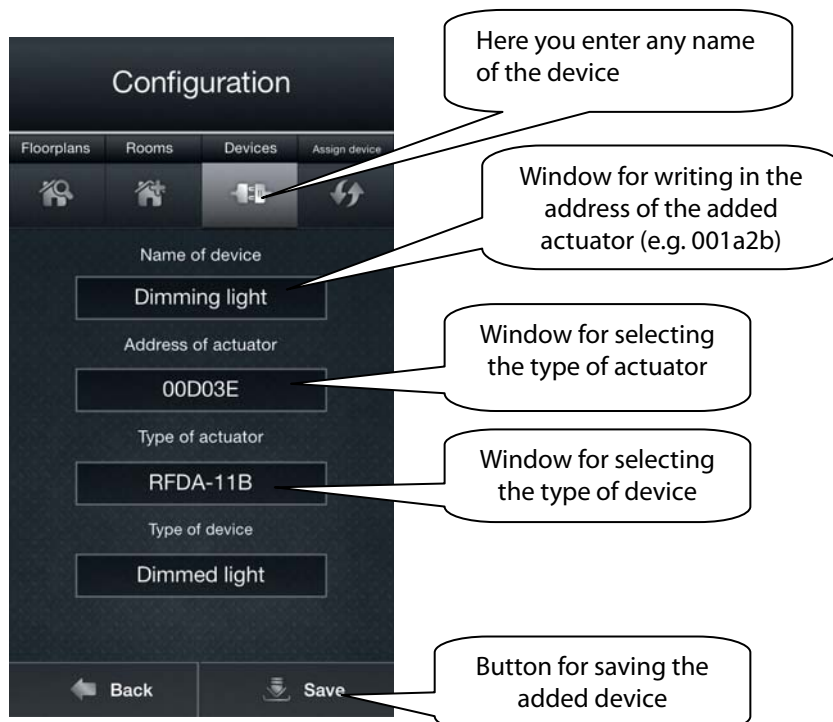
Though the floor plan that you select upon creating the room will not be displayed in your telephone application, it is necessary to select it when creating the room.

Rooms



You can name the rooms as you like by entering your chosen name into the "Room name" field. You can select the type of room with regard to the used icon.

d) Devices - adding RF actuators



To add a device that you want to control via the application, just fill in the four fields based on the image and save.

Then after clicking on the device icon, the added device will be displayed.

If you want to remove the device, press and hold your finger over the device until it disappears. If you only want to rename the device or perform any other modification, tap on it shortly to open its settings.



After adding rooms and all devices, you must still assign the devices to the rooms in which they are found. This is not a condition, and you can add devices even in every room. You can do this by clicking on the "Assign" button, where you select the room into which you want to assign the device. Then, by tapping the confirmation buttons, you select which elements will be in the given room.



If you have selected a device for a desired room, continue by pressing the "Next" button in the lower right corner for displaying the confirmation screens. Here you confirm the added device by pressing "Save". Do the same to change added devices, only you change the status of the confirmation buttons when selecting the device.

e) Tab "Favorites"

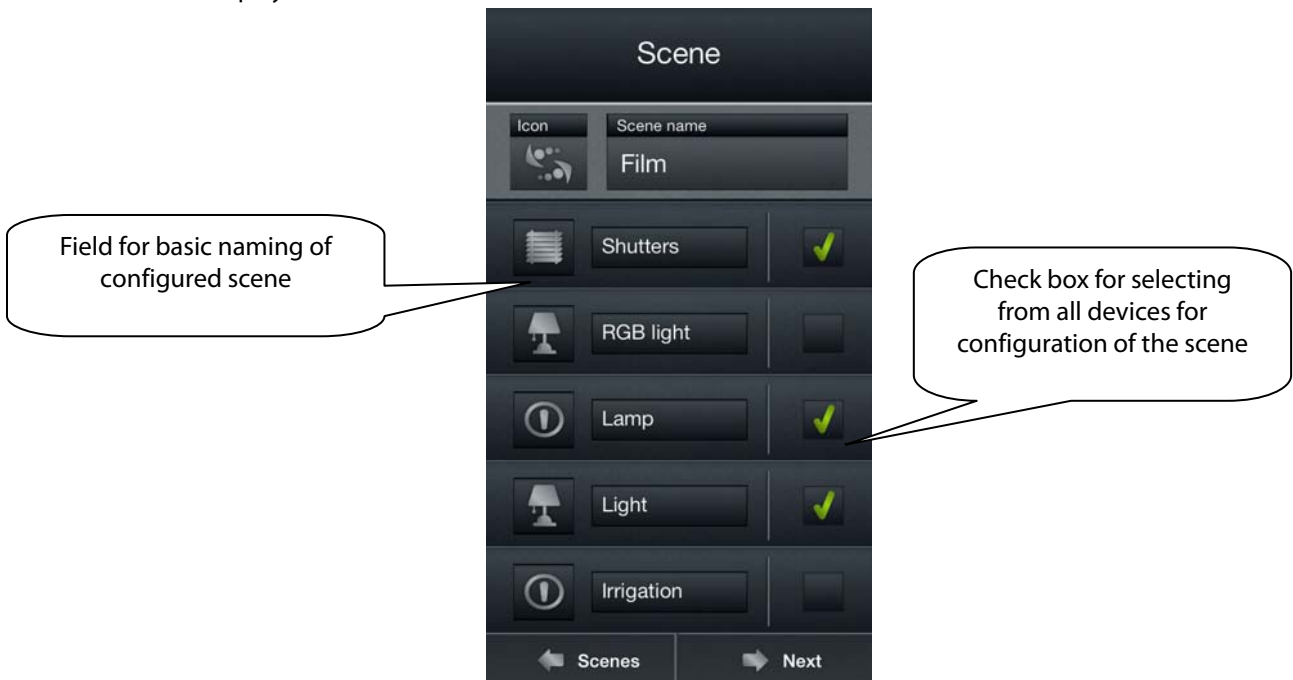
After pressing, the application desktop appears with the buttons "Next" and "Add". After pressing "Add", a list of configured devices opens, which you select by checking the option. Then after pressing "Save", it is assigned automatically to the list in the "Favorites" tab.



f) Tab "Scenes"

The list of scenes is used to activate the user's predefined scenes, such as all off, all on, all blinds up, all blinds down, etc.

Upon initial configuration, select the "Add" button displayed on the screen. After clicking, you will see the display as shown below.



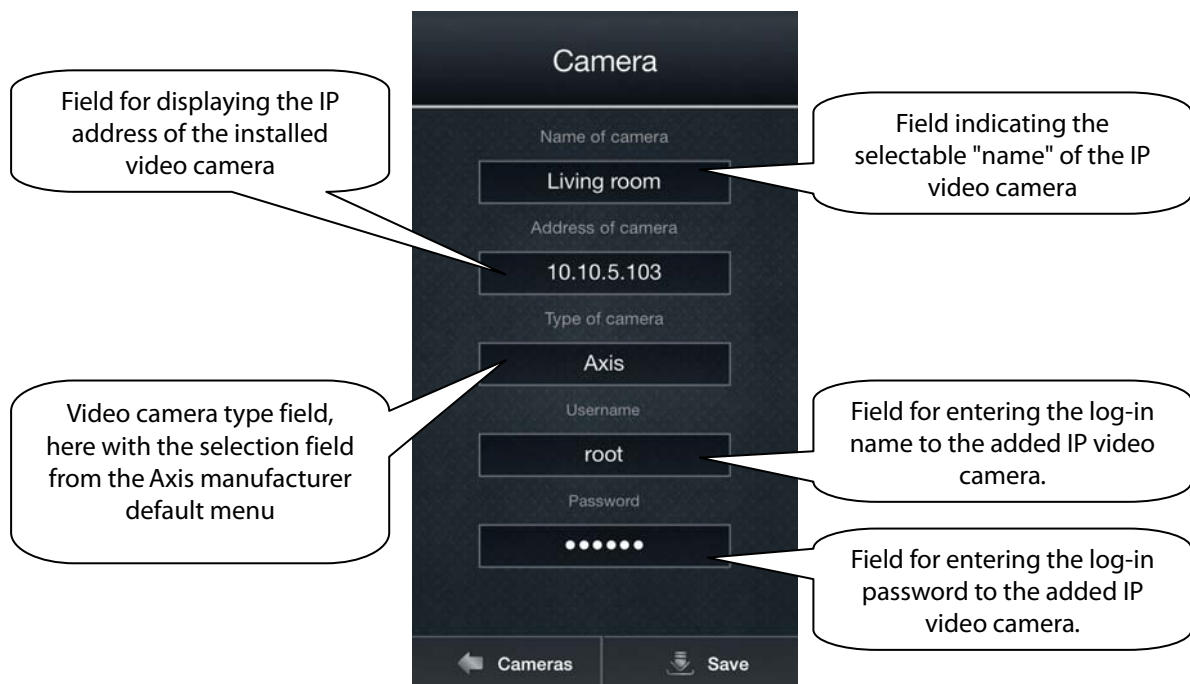


g) Tab "Video cameras"

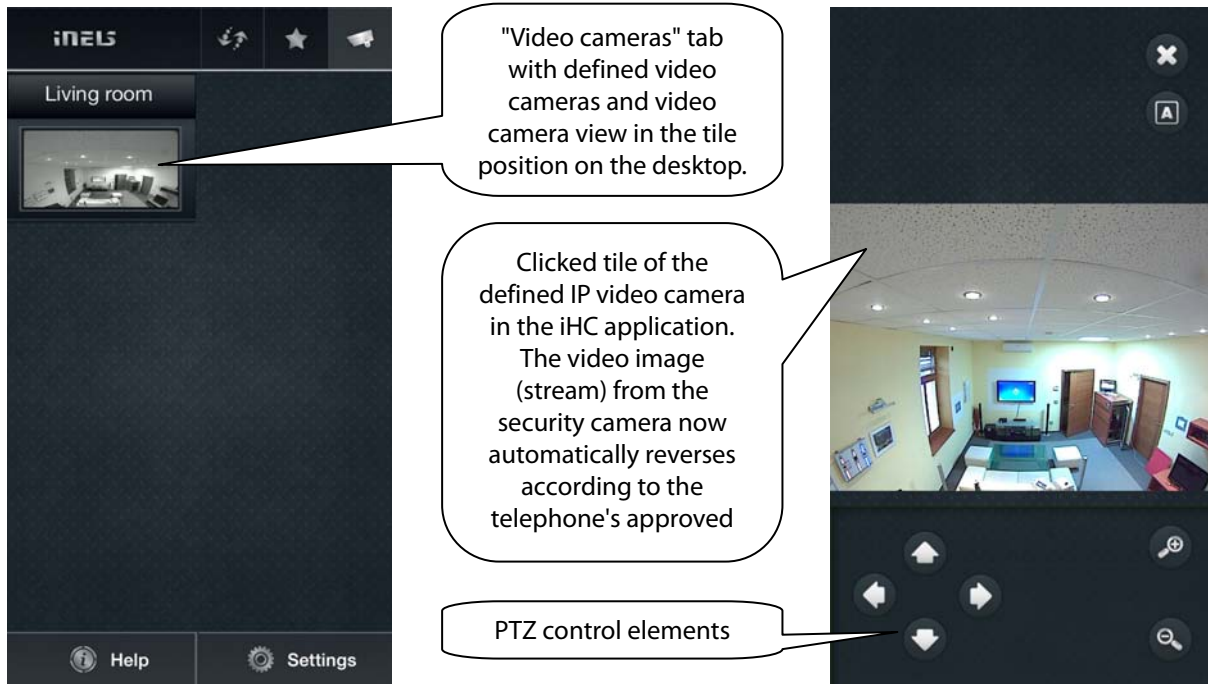
If you wish to have video cameras closer "at hand", you can add video cameras to the quick display - Tiles.

In the iHC application, you can also view the current image (stream) from home security Axis IP video cameras. Upon initial configuration, select the "Add" button displayed on the screen. After clicking, you will see the display with Axis IC camera settings as shown below.

The application allows full screen video camera display, and bringing up the PTZ panel for its control is performed by pressing and holding the relevant video camera view.



After filling in all the required fields on the display, press Save. The application saves the settings and automatically adds the video camera to the list of devices in the "Video cameras" tab. If you want to permanently delete the camera from the list, press and hold the given list item.



4. Control

a) Tiles

The main display in the iHC application is formed of so-called "Tiles". This is a general overview of elements, where you can see at first glance according to the icons, either backlit or not, the active icons in the intelligent electrical installation.

Based on the previous step "configuration and settings", the initial display shows the application's default tiles, so that they are assigned according to elements in rooms (such as "Kitchen") or in groups (as seen on the display e.g. "Lights or All").

If you wish to go from displaying Tiles to displaying List, just click on the name of the tile, e.g. Lights, and a pop-up menu appears in the given tile ("rooms").

The image shows two screenshots of the iHC application interface. The top screenshot displays a grid of tiles for 'Bedroom', 'Study room', 'Kitchen', and 'All'. The bottom screenshot shows a detailed view of the 'All' group, listing devices like 'Light', 'Dimming tube', 'Dehumidifier', 'Lamp', and 'Gate', each with a status indicator and a slider for brightness.

Basic overview of configured tiles in the Applications menu.

Tile "Kitchen"

Tiles - if the configuration is set up with more than six tiles on the default display, moving between them is performed by using your finger to drag the display left or right

Button for configuring the system and settings from the application

Arrows for switching between rooms or groups

Status bar of monitored rooms or groups, - by using your finger to drag and scroll left or right, you can switch between individual groups, rooms, and thus see individual devices located within each.

Symbol, icon assigned to the given actuator, device

By dragging your finger on the display, you can scroll up and down through tiles

Actuator output status indicator, or device switched on - brightness at 50%. To bring up the brightness setting, the slider must be held on the actuator tile

Actuator output status indicator, or device switched on, off

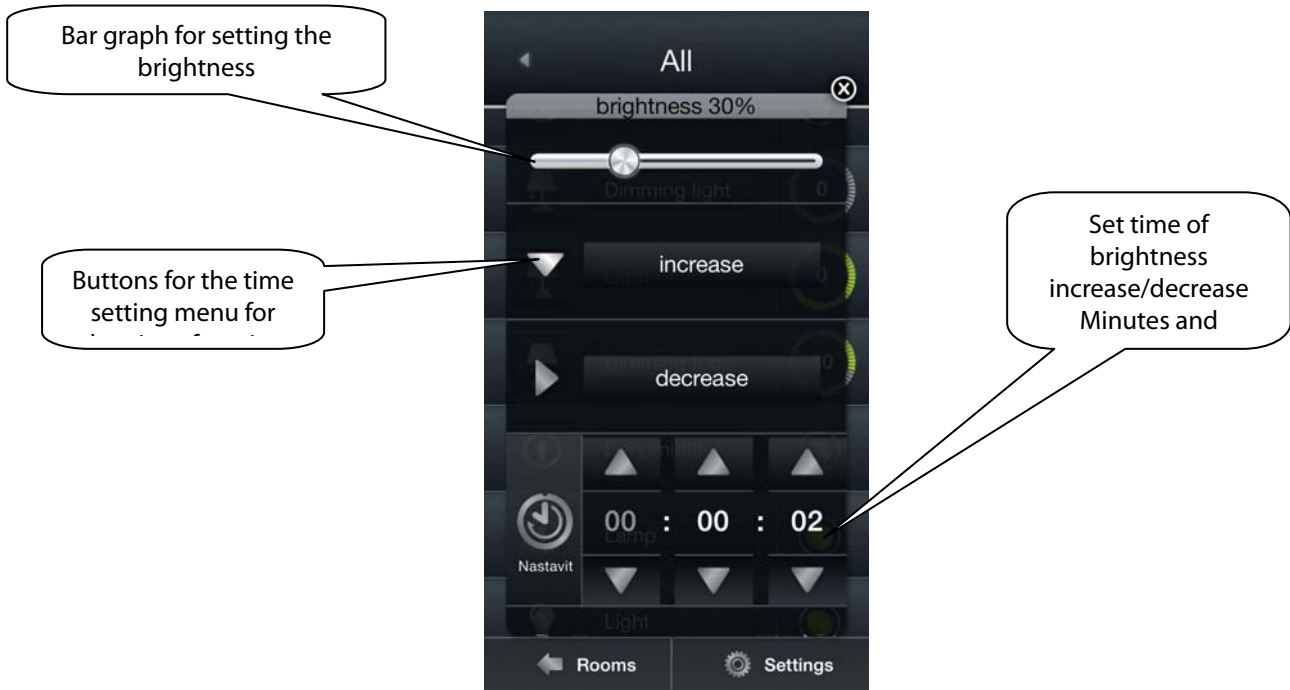
Tiles for individual devices in rooms or a group

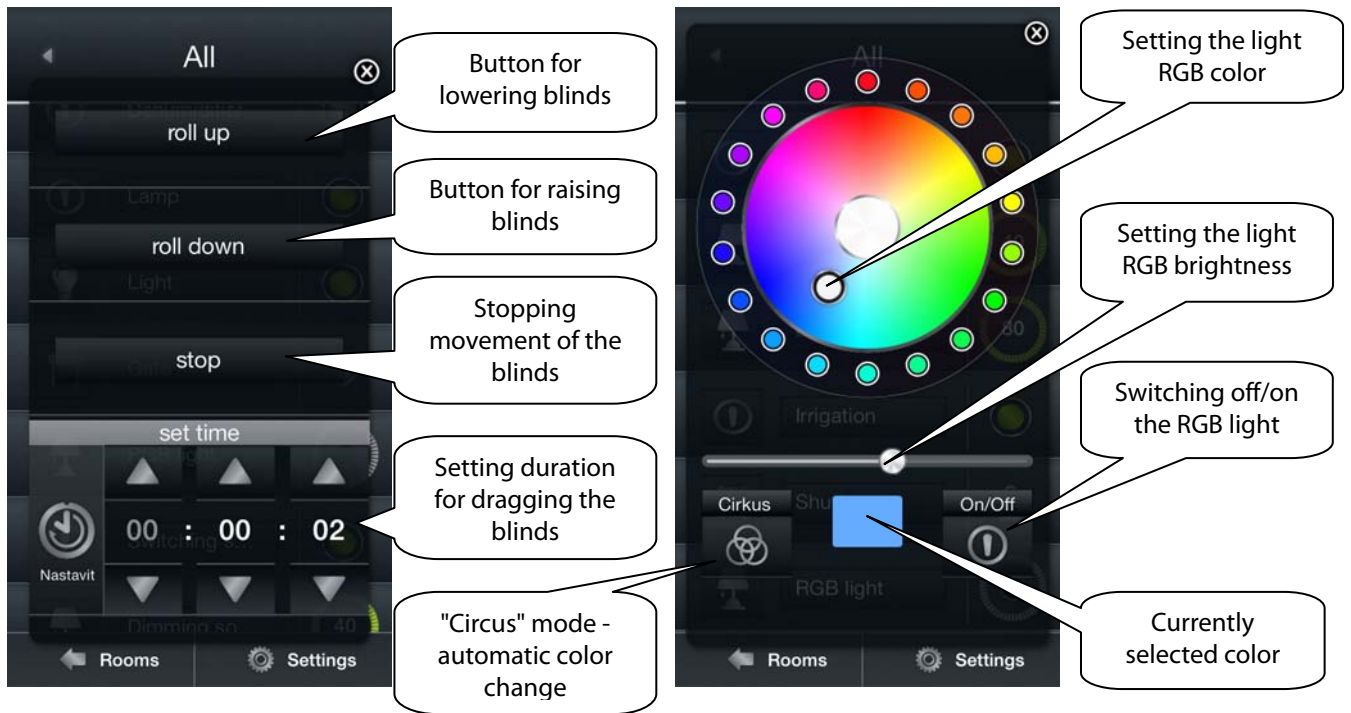
If you press and hold your finger on individual devices, e.g. for a dimmed light, a bar graph appears for setting the brightness of the dimmed light. Two icons are displayed underneath it - brightness increase and decrease, enabling smooth dimming and brightening of your light. Using the arrows, you can open a menu where you can set the precise time of these functions, which you confirm by clicking on the settings icon.

For switching actuators, you can run delayed on/off, and you can tap the arrows to adjust their times.

The blinds actuators can be programmed the same way.

The setting of one time for both directions applies to blinds actuators.





By pressing and holding the RGB actuator, you will see the menu displayed for setting color, brightness and the brightening mode.